



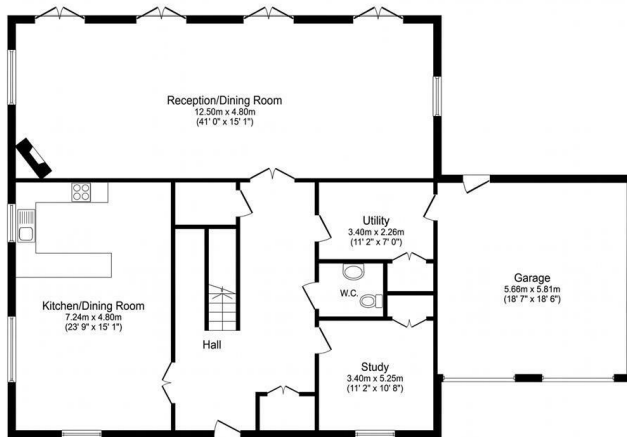
## Duchess Crescent

, Stanmore HA7 3GH

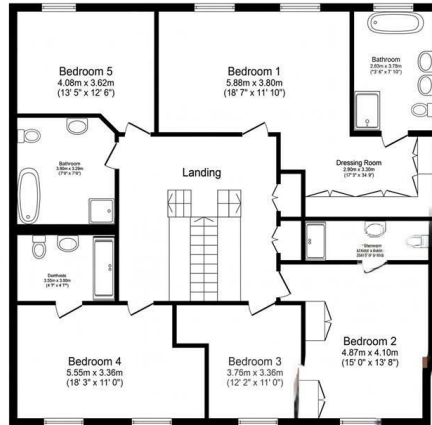
- Prestigious Bentley Priory Development
- Modern high quality finishes
- Double Garage
- EPC-H
- Highly Sought After Detached Family Residence
- Beautiful garden with cabin
- EPC-B

**£8,250 Per Month**

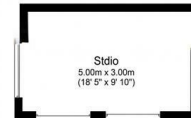
Local Authority **Harrow**  
Council Tax Band **H**  
EPC Rating **B**



**Ground Floor**



**First Floor**



**Outbuilding**



**London Office Office**

Spaces Victoria, 25 Wilton Road, Pimlico,  
London, SW1V 1LW

**Contact**

020 3084 3094  
XL@londonvictoriagroups.co.uk  
www.londonvictoriagroups.co.uk

Agents Note: Whilst every care has been taken to prepare these particulars, they are for guidance purposes only. All measurements are approximate and for general guidance purposes only and whilst every care has been taken to ensure accuracy, they should not be relied upon and potential buyers/tenants are advised to recheck the measurements.